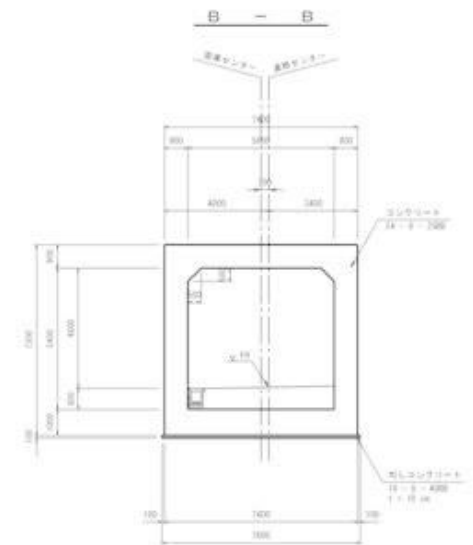
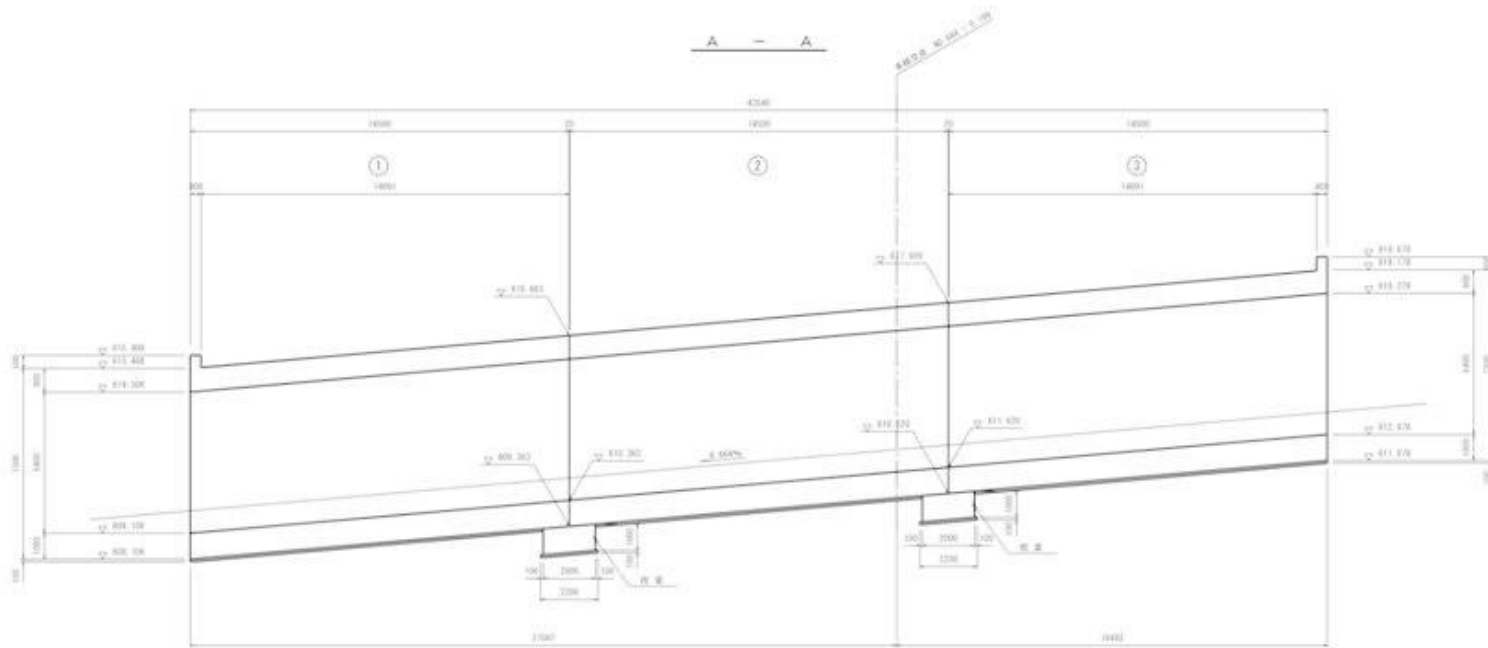
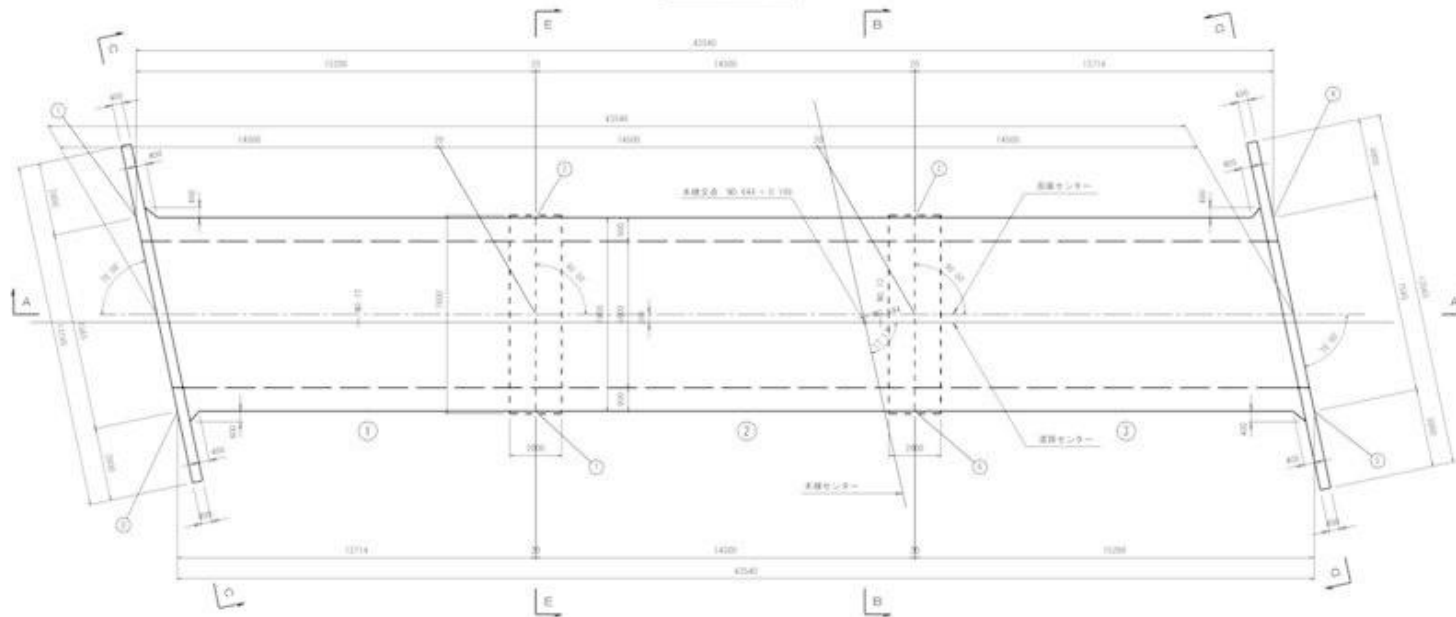


3号函渠工構造一般図(1) 1:100



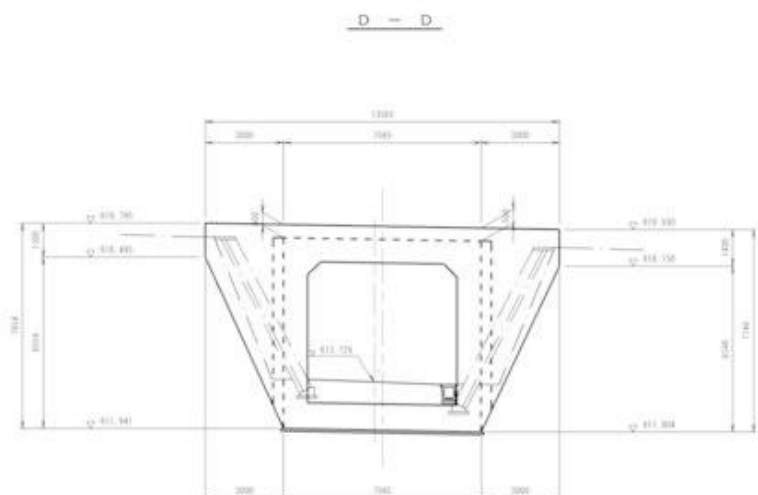
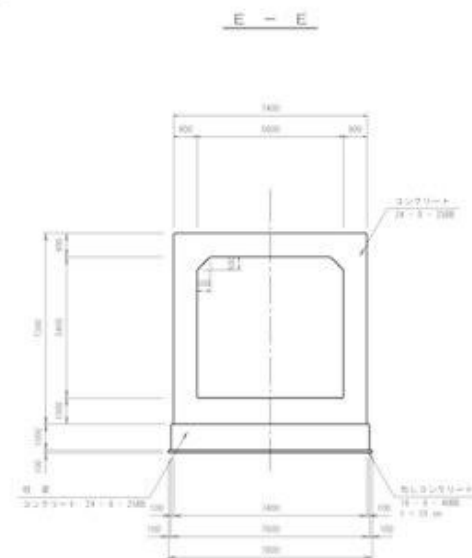
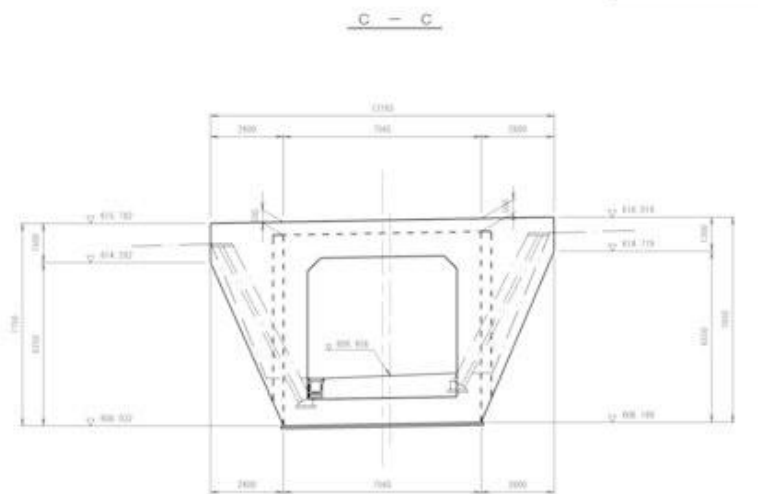
平面図



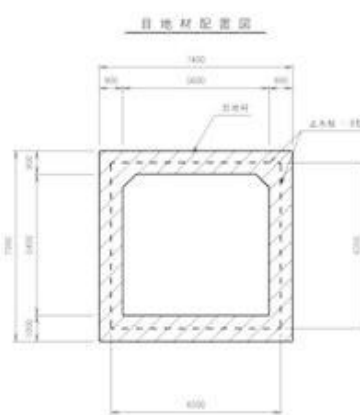
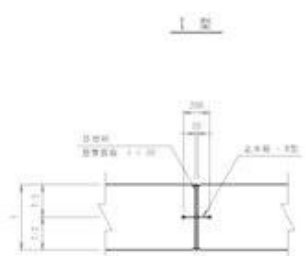
高標表

番号	Y	X
①	-61,245,820	-57,824,120
②	-61,252,820	-57,808,820
③	-61,258,670	-57,812,820
④	-61,265,670	-57,811,820
⑤	-61,261,700	-57,814,820
⑥	-61,258,570	-57,806,820
⑦	-61,228,920	-57,807,820
⑧	-61,242,940	-57,807,820

3号涵渠工构造一般图(2)



自他材料詳图

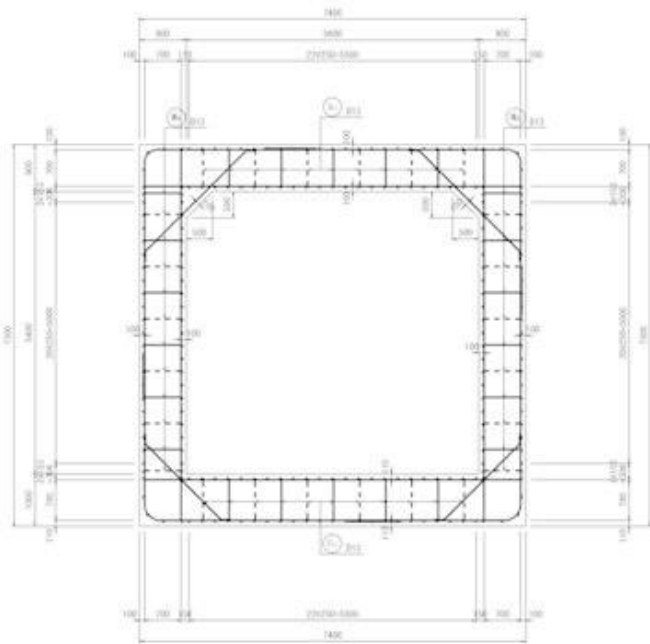


3号涵渠工 材料表

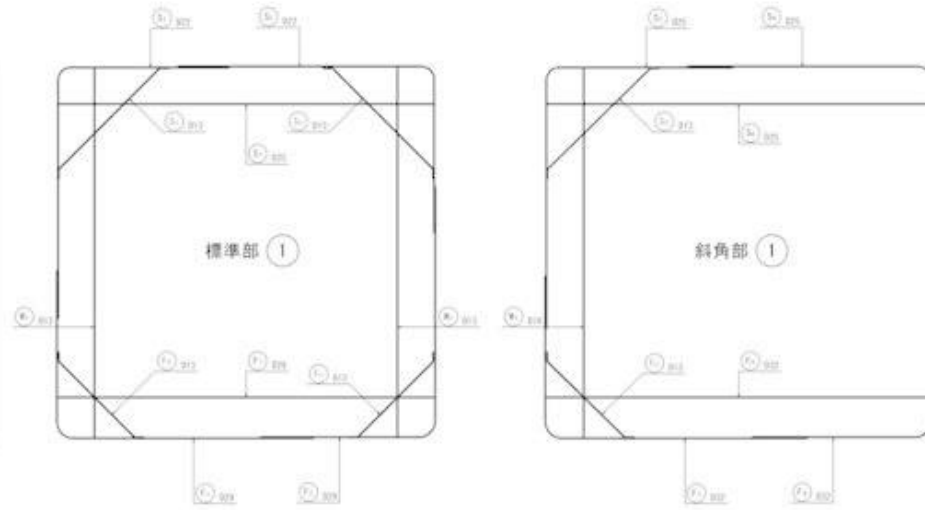
名称	规格	单位	数量	备注
钢筋	Φ16	m ²	1100	
	Φ18	m ²	100	
	Φ20	m ²	100	
混凝土	C20	m ³	100	

3号函渠工配筋図(1) (1ブロック)

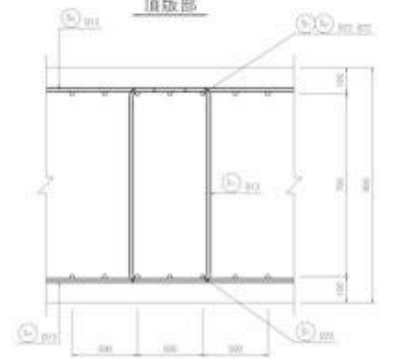
断面図



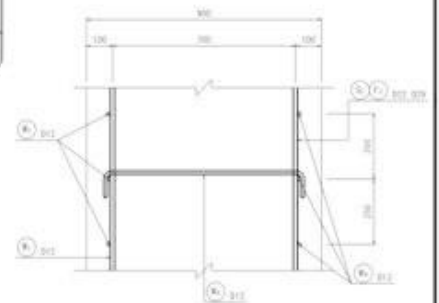
主鉄筋相立図



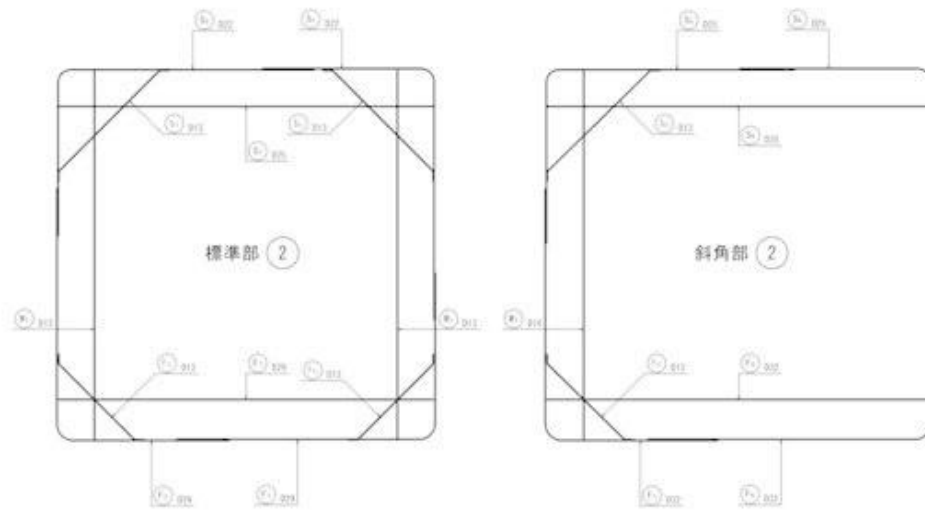
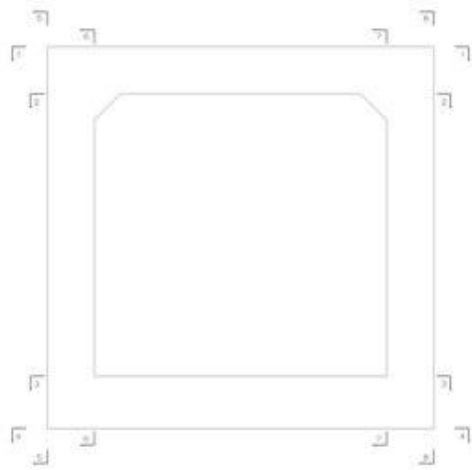
相立図
頂板部



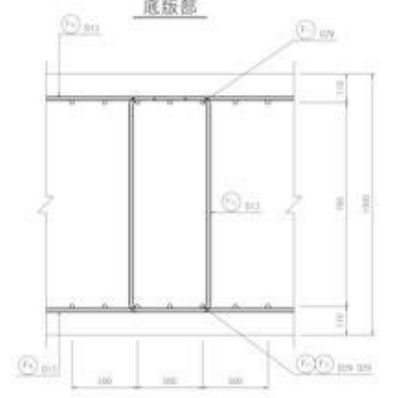
側壁部



位置図



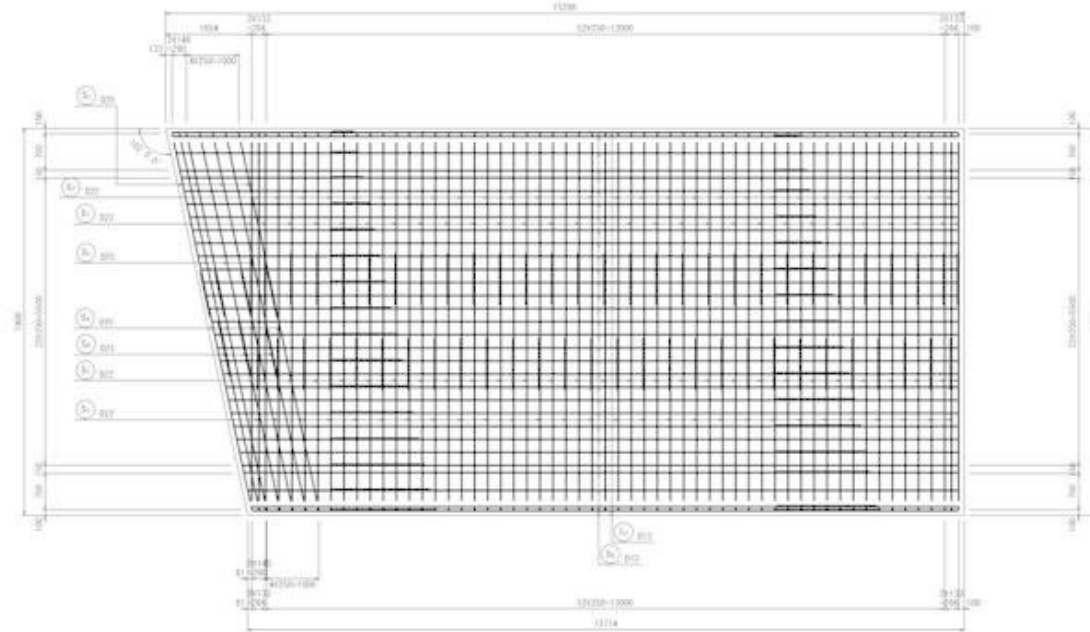
底板部



3号函渠工配筋図(2)

(①ブロック)

1-1



2-2

